

METALLIC HOLOGRAPHIC™

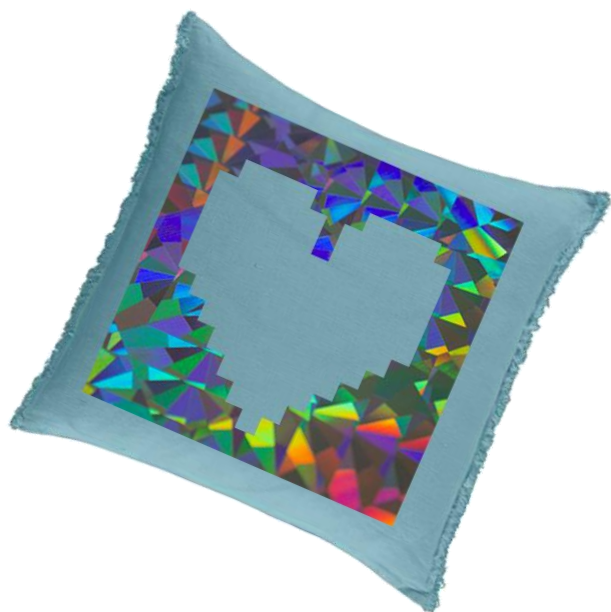
THE METALLIC TRANSFER FILM WITH HOLOGRAPHIC EFFECT PERFECT FOR ACCESSORIES PERSONALISATION

Looking for a metallic transfer film with holographic effect very easy to cut and weed?
 Metallic Holographic is a PU film with a super glossy metallic look.

Fashion accessories

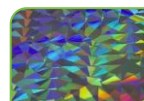


Home decor



Product description

- ✓ Great glossy metal finish.
- ✓ Very thin → Comfortable to wear.
- ✓ Perfect for weightless textiles thanks to its thinness.
- ✓ Discover the colour of our product:



Super Rainbow 422

Application key points

- ✓ Very easy to cut.
- ✓ Easy to weed → saves production time.
- ✓ Qualitative metallic visual effect without wrinkled finish.

Usage benefits

- ✓ Recommended for adding decorative details to fashion and home deco accessories.
- ✓ Perfect for very small and precise designs.
- ✓ Clean finish with no glue excess.

SPECIFICATIONS

| Composition | Average Thickness | Carrier | Dimensions |
|-------------|-------------------|----------------------------------|---|
| Foil | 60 µm | Adhesive & Transparent Polyester | All references available in: 48cm x 5 m |

APPLICATION INSTRUCTIONS

| Applies on | Cutting | Application Temp. & Duration |
|---|----------------------|------------------------------|
| Acrylic Cotton/Polyester blends without repellent treatment | Flex Blade 45° | 145°C – 15 s 293°F – 15 s |

| Pressure | Peeling |
|----------|---------|
| Medium | Cold |

Step 1 – Cutting

Set up the cutting of your heat transfer film in mirror mode and use a standard flex blade of 45°.

Step 2 – Weeding

Remove the excess of material (easy weeding).

Step 3 – Application

Position your design on the textile and press it with a Sefa DUPLEX/ROTEX or equivalent at 145°C/293°F for 15 seconds with a medium pressure.

We do recommend the use of a silicone paper to protect the designs and the textile during the application.

Step 4 – Peeling

Peel the material when cold.

NOTE: We highly recommend you to perform tests before launching a production.

CARE AND MAINTENANCE RECOMMENDATIONS

| Washing | Ironing | Tumble-dry | Dry cleaning |
|-------------------|----------------------|-----------------|-----------------|
| Hand washing only | On reverse side only | Not recommended | Not recommended |

Care and maintenance:

- ✓ Always respect the garments' instructions.
- ✓ Wait 24 hours after the application before the first wash.
- ✓ Avoid the use of aggressive products.

| Storage life | Storage Temperature & Lightning | | Position |
|--------------|---------------------------------------|--------------------|-------------------|
| Up to 1 year | Dry room with 15°C-30°C/ 59°F-86°F | Away from sunlight | Vertical position |

Washing recommendations:

- ✓ Respect the textile recommendations.
- ✓ Preferably inside out to extend the design's life.
- ✓ Do not bleach.